



Istruzioni di Montaggio

Assembly Instructions



ZIO TOM

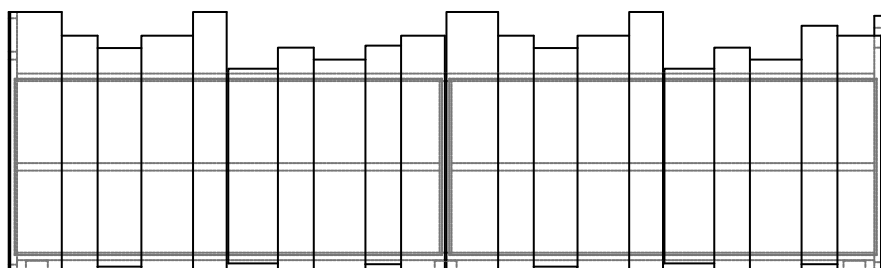
Credenza | *Sideboard*

Designer: Claudio Bitetti

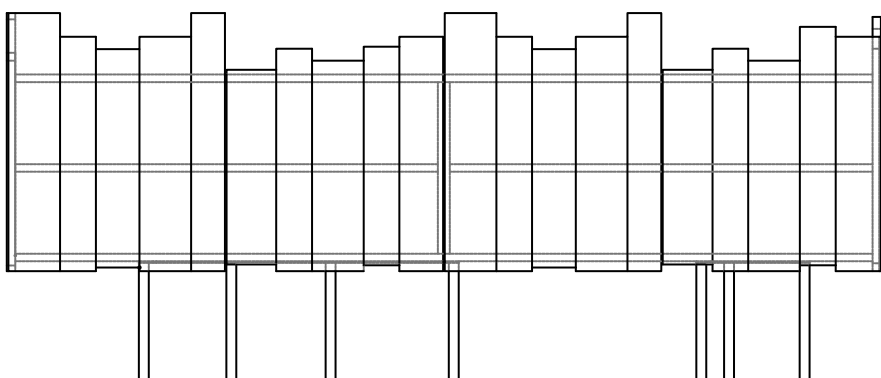
Anno | Year: 2012

Materiali | *Materials:* Credenza con ante e spalle in legno di abete finitura "prima patina" e struttura e ripiani laccati | *Sideboard with doors and sides made in "Prima patina" finishing Antique pine and laquered structure and shelves*

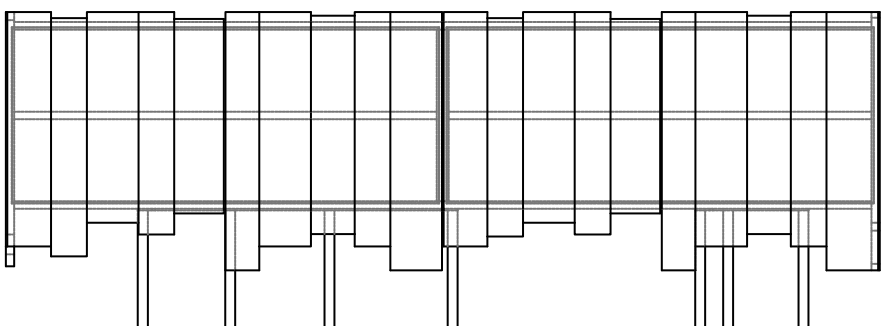
VERSIONE A



VERSIONE B



VERSIONE C

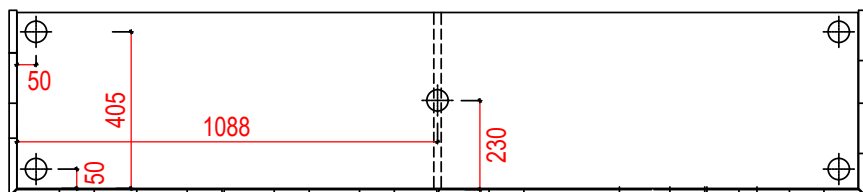


Istruzioni per la pulizia:

Utilizzare un panno asciutto

Cleaning instructions:

Please use a damp cloth

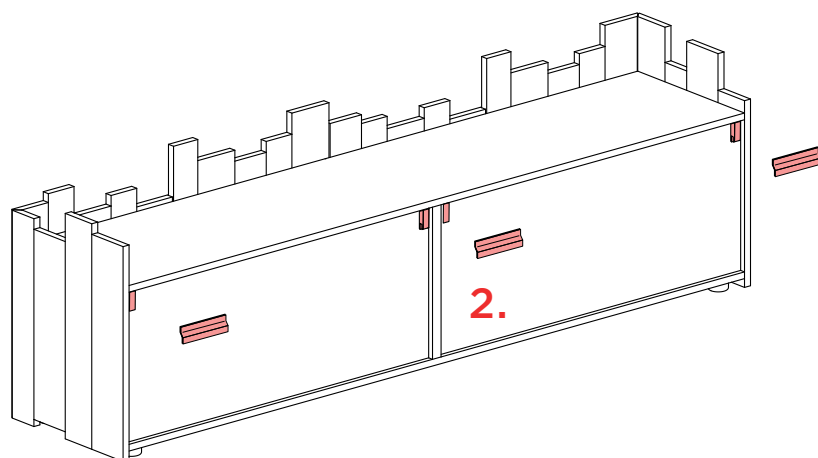
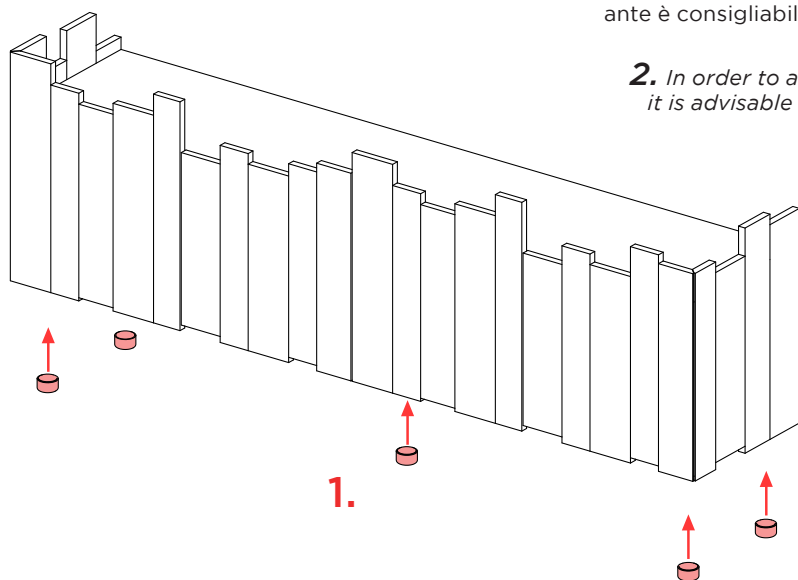


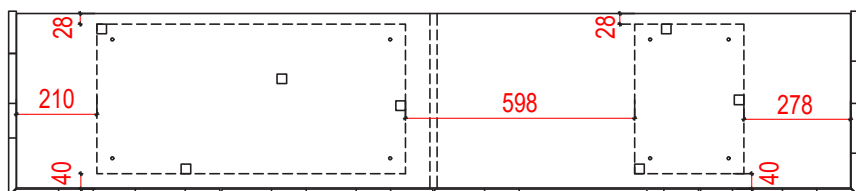
1. Fissare i piedini con le viti fornite seguendo le quote dello schema indicato

1. Fix the pins with the screws provided following the dimensions in the diagram shown

2. Per evitare il ribaltamento aprendo contemporaneamente tutte le ante è consigliabile fissare il contenitore alla parete, utilizzando le barre reggipensile fornite nell'imballo

2. In order to avoid tipping when opening all doors at the same time, it is advisable to fix the container to the wall, using the support bars supplied in the packaging



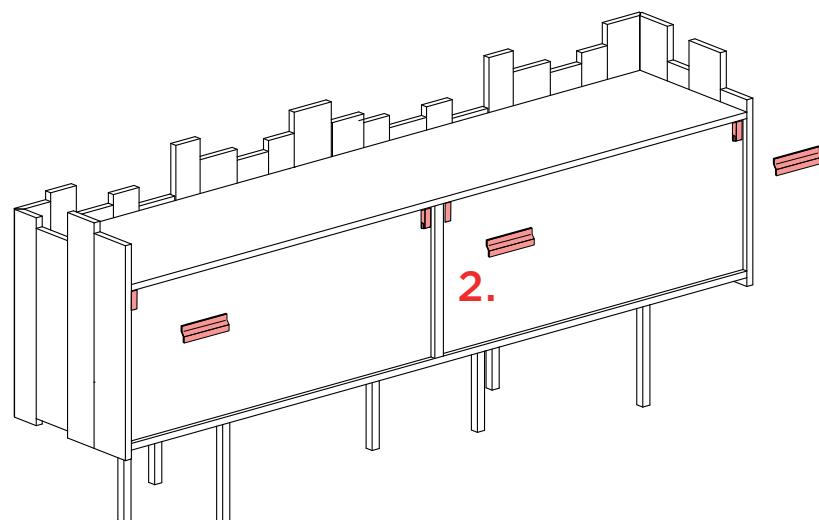
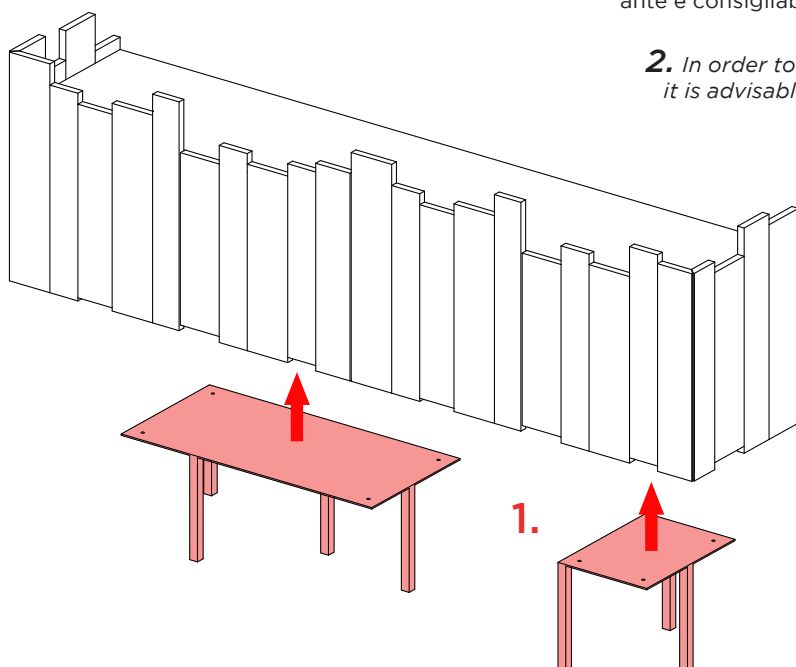


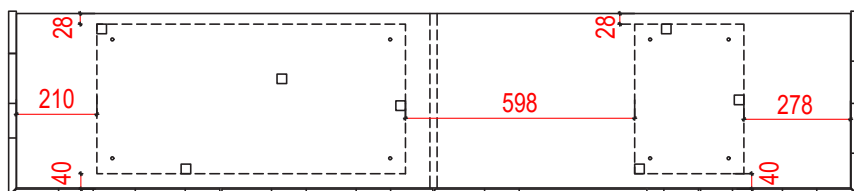
1. Fissare i piedini con le viti fornite seguendo le quote dello schema indicato

1. Fix the pins with the screws provided following the dimensions in the diagram shown

2. Per evitare il ribaltamento aprendo contemporaneamente tutte le ante è consigliabile fissare il contenitore alla parete, utilizzando le barre reggipensile fornite nell'imballo

2. In order to avoid tipping when opening all doors at the same time, it is advisable to fix the container to the wall, using the support bars supplied in the packaging





1. Fissare i piedini con le viti fornite seguendo le quote dello schema indicato

1. Fix the pins with the screws provided following the dimensions in the diagram shown

2. Per evitare il ribaltamento aprendo contemporaneamente tutte le ante è consigliabile fissare il contenitore alla parete, utilizzando le barre reggipensile fornite nell'imballo

2. In order to avoid tipping when opening all doors at the same time, it is advisable to fix the container to the wall, using the support bars supplied in the packaging

