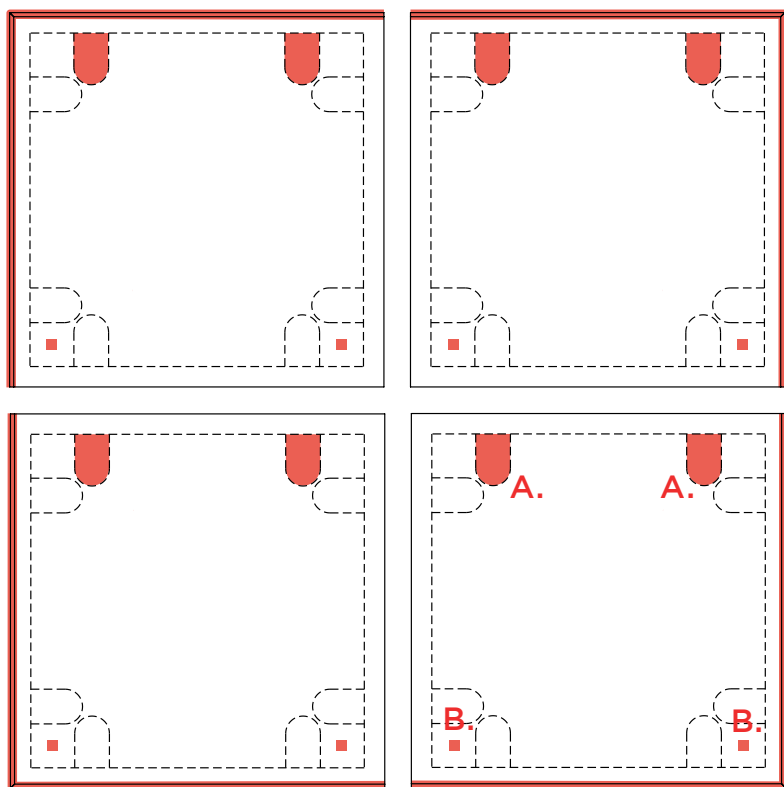




NARCISO

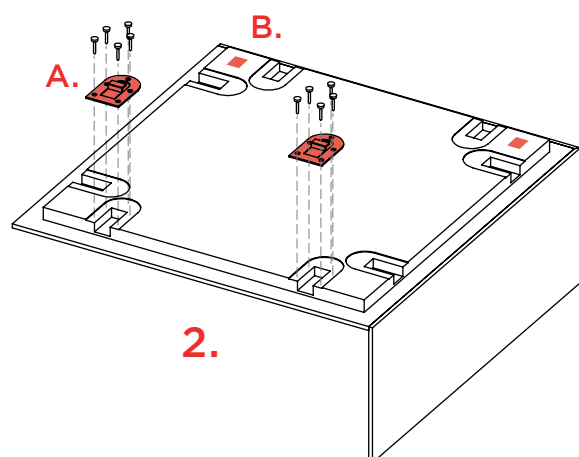
Specchio | *Mirror*

Designer: Claudio Bitetti
Anno | Year: 2025
Materiali | Materials: Specchio a parete con mensola | *Wall mirror with shelf*



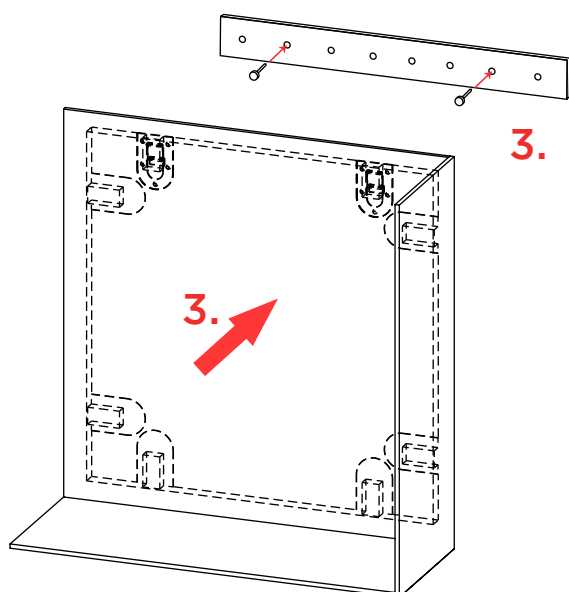
1.

1. Scegliere la posizione della mensola/cornice
1. Choose the position of the shelf/frame



2.

2. Montare i ganci (A) sul pannello con le viti fornite in dotazione e applicare il gommino (B)
2. Mount the hooks (A) on the panel with the screws provided and apply the grommet (B)



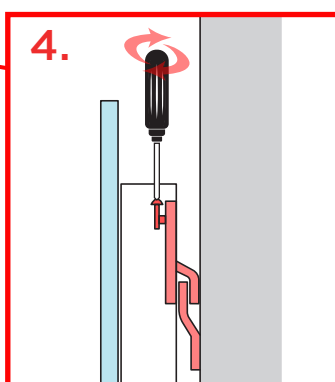
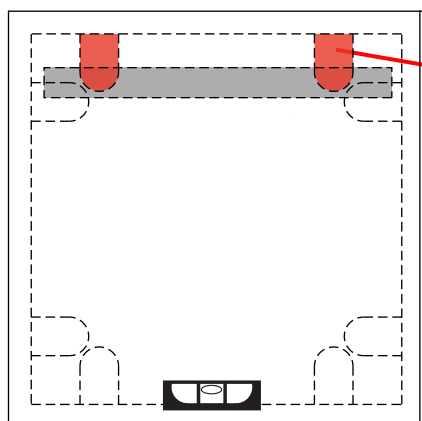
3.

3. Fissare la barra reggipensile alla parete e agganciare lo specchio con i supporti montati precedentemente

3. fix the hanging bar to the wall and hang the mirror with the previously mounted brackets

4. Se necessario regolare l'inclinazione tramite le viti presenti sui ganci superiori

4. If necessary, adjust the tilt by means of the screws on the upper hooks



carico uniformemente distribuito
uniformly distributed load

- BIG: max. **8 kg**
- MEDIUM: max. **5 kg**
- SMALL: max. **3 kg**

Istruzioni per la pulizia:

Utilizzare un panno morbido

Cleaning instructions:

Please use a soft clothe